



Waikite Valley School

Developing Learners for Life

1090 Waikite Valley Road, RD 1, Rotorua 3077 Tel 07 3331888



Weekly Panui - Wednesday 22nd August, 2018

Kia ora,

It's been a busy in all our classrooms, with any opportunity taken to have some active time outside between showers.



This Friday the GPA are running a sausage sizzle to help towards costs associated with attending the NZAIMS in Tauranga so bring along \$2 or more to buy a sausage.

Are you a keen gardener? Thinking about getting seedlings for the long awaited spring ? Hold that thought! We have a fundraising opportunity through Awapuni Nursery

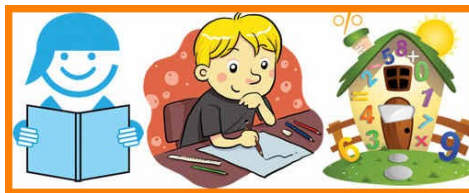
(www.awapuni.co.nz) . We get a proportion of all sale to our community for a 2 - week period. More details next week.



We are still looking for cardboard to help suppress weeds in our food forest.

Reminder: Staff are running a workshop : Reading, Writing and Maths @ Waikite Valley School tomorrow from 3.15.

Come along if you want to learn about how things change from year 1 to year 8.



Ngā Mihi

Niall Dinning

Acting Principal

Waikite Valley School

Developing Learners for Life

principal@waikitevalley.school.nz

0274303014/3331888

IMPORTANT DATES

Wednesday 22 August

- ★ BOT meeting
6.30pm

Thursday 23 August

- ★ Reading Writing and Maths@Waikite
3.15 - 4pm

Thursday 30 August

- ★ Reading Together
6.00 - 7.15pm

Monday 3 & Tuesday 4 September

- ★ GPA Snow Camp

Monday 10 - 14 Sept

- ★ NZAIMs games

NOTICES DUE

- ★ **Aims Games - Permission and Medical Forms**
- ★ **Please note , any outstanding fees for extra curricula activities must be paid ASAP or the activity will not be available.**

Developing learners for life"

SHARING LEARNING ACROSS THE SCHOOL



On the 21/8/18 six kids did the Amazing Race . Our team was Siniva , Sophie, Jorja, Luke , Max and Syris. First we got two dice and tried to roll any pairs, when we got it around the whole group Pip ran up and got a bag. In the bag there was a passport with what we needed to find, there were also some activities to do . For example one thing in the passport was to find a Rotorua sign and do our best pose. An activity was to find a cone head lady with a bag, in the bag there was a jar of lollies, we had to estimate how many lollies were in the jar.

We had quite a lot of time, it was about one hour fifty. When the time finished we didn't find two things in the passport but I think we did O.K. Afterwards we went across the road to get an ice cream it was so good

Big thanks to Pip for using up her time for us, Thank you so much Pip!

By Jorja Cathcart

Reading Together

The Third of four sessions will be held Thursday 30th August at 6pm.

This is a fun, interactive programme for the whole family.



Clarifying School Donations and Fees

In the last few weeks we have had some questions about these items. The following text is copied from the Ministry of Education's guidance on this issue:

Section 3 of the Education Act 1989 (the Act) states that every domestic student is entitled to free enrolment and free education at a state school or partnership school kura hourua from the person's 5th birthday until 1 January following the person's 19th birthday.

Clarifying School Donations and Fees

This means schools cannot charge domestic students a fee for enrolment or attendance, or for delivery of the curriculum. The only exception to this rule is that proprietors of state-integrated schools can charge attendance dues.

Donations

Payment is voluntary. Donations can be for general purposes, or for a specific purpose such as library books or sports equipment. They can be requested, but payment cannot be compelled or enforced. It must be made clear that donations are voluntary.

GST is not payable on donations, and tax credits can be claimed.

Purchase of Goods and Services

Payment must be made for the purchase of goods or services, but only after a parent has freely chosen to make the purchase. Schools must provide students and parents with information on any charges before they agree to receive goods or services.

GST is payable, and tax credits cannot be claimed.

For more information on donations and fees see education.govt.nz | Search for 'Donations' | Read Circular 2018/01

Fees and Donations at Waikite Valley School

Fees are generally for 'extras' over and above the delivery of the curriculum e.g. music tuition, school camps, sports activities or third party activities that the school facilitates for students. We are not funded, and do not budget for, these items. If they are unpaid we must cover the debt from funds that are provided for the delivery of the curriculum for all children.

Donations help us add additional value to the curriculum. They go towards things like extra colour photocopying, school trips as a part of our programme, some books for the library etc. We are funded for some of these items but delivering a high quality curriculum puts pressure on resources. This is what we generally use donations to support.

Your next statement will have all items clearly identified for you. Thanks for your support in this.

Niall Dinning
Acting Principal
Waikite Valley School - Developing Learners for Life

Waikite Valley School Lunch Price List

Hawaiian & Meat lovers Toasty Pies \$2.00

Hawaiian & Meat lovers Pizza \$2.00

Hot Bites Pizza is the perfect sized lunch portion for kids and young adults.

Sausage Rolls \$1.00

Good & Tasty Pies \$2.00

Good and tasty pies come in two traditional flavors, mince and mince & cheese.

Juicies & Moosies \$1.00

Original Juicies can contribute to the recommended two servings of fruit a day and contain NO preservatives, colours or artificial flavours. Moosies are the totally cool flavoured milk freeze for kids on the go.





* To Kevin from Auto Sports for kindly doing the Van's warrant

* Thanks heaps to Pip for transporting and managing the year 5 & 6 Amazing Race Team.



Waikite Valley School Slink Run Families

Austin's Farm—78785 have moved their slink calf location next to the old Palm kernel bin.

We have a **200 litre Quantum one** (retail value \$1047.34 GST incl.) donated from Farmlands as a fundraiser for our AgriKids Team travelling to Invercargill to compete in the Grand Championship this July. If you can support us by purchasing this item, please contact the office. Money raised will go towards flights & accommodation.

PGG Wrightson



Friends of Waikite Valley School



Funding Your Community

Pub Charity™

THE HEART OF COMMUNITY FUNDING



COMMERCIAL and RESIDENTIAL

021 222 9993
sa.builders@outlook.com



MITRE 10

MEGA



P: 027 333 1686

E: frasercontracting@outlook.com

- Cleaning off farm races
- Trenching
- Post Hole Boring
- 5.5t Digger Hire
- Truck Hire